



Characteristics
Output Power 1W
Wavelength: 785nm
Fiber Coupling 105μm
Fiber Core Dia. 0.22NA
Applications
Medical use,

Parameter		Symbol	Typical	Unit
Optical	CW Out Power	$P_{op}$	1	W
	Center Wavelength	$\lambda$	785±3	nm
	Spectral Width (90% of Power)	$\Delta\lambda$	<3.0	nm
	Wavelength Shift width Temperature	$\Delta\lambda/\Delta T$	0.30	nm / °C
Electrical	Threshold Current	$I_{th}$	0.7	A
	Operating current	$I_{op}$	1.5	A
	Operating Voltage	$V_{op}$	2.0	V
	Slop Efficiency	$\eta_{es}$	1.25	W/A
	Power Conversion Efficiency	$\eta_{ep}$	35	%
Fiber	Fiber Core Diameter	$d_{core}$	105	μm
	Fiber Cladding Diameter	$d_{clad}$	125	μm
	Fiber Buffer Diameter	$D_{buffer}$	250	μm
	Numerical Aperture	NA	0.22	-
	Connector	-	SMA905	-

Changchun New Industries Optoelectronics Tech. Co., Ltd

<http://www.cnilaser.com>

◆ CONTACT

No.888, Jinhua Road, High-tech zone, Changchun 130103, China

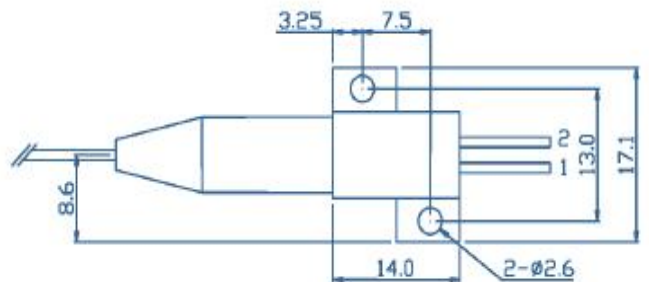
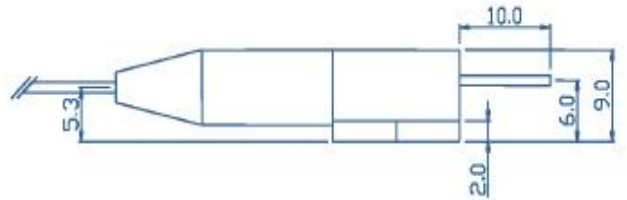
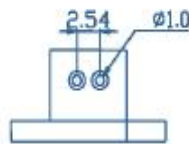
Phone: 0086-431-87033597

Fax: 0086-431-87033597

## Other Parameters

Parameter	Operating Temperature/°C	Operating Relative Humidity/%	Storage Temperature/°C	Storage Relative Humidity/%	Lead Soldering Temperature, 10s max/°C
Min	10	-	-20	-	-
Max	40	75	80	90	250

## Package Dimensions (mm)



Pin-Out Assignment

Pin	Function
1	LD (+)
2	LD (-)

AVOID EXPOSURE Laser radiation is emitted from this APERTURE

**DANGER**

LASER RADIATION—AVOID EYE OR SKIN EXPOSURE TO DIRECT OR SCATTERED RADIATION

PEAK POWER: 10W WAVELENGTH: 808nm-1064nm  
CLASS IV LASER PRODUCT

This device complies with 21 CFR 1040.10 and 1040.11  
Changchun New Industries Optoelectronics Tech. Co., Ltd (CNI)  
668 Changqin Rd., Changchun, P.R. China

Changchun New Industries Optoelectronics Tech. Co., Ltd

<http://www.cnilaser.com>

### ◆ CONTACT

No.888, Jinhu Road, High-tech zone, Changchun 130103, China

Phone: 0086-431-87033597

Fax: 0086-431-87033597