



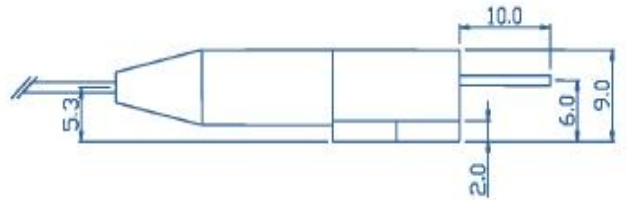
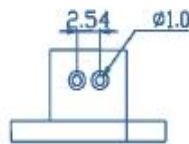
Characteristics
Output Power 8W
Wavelength: 976nm
Fiber Coupling 105μm
Fiber Core Dia. 0.22NA
Applications
Laser pumping, Medical use, Material processing

Parameter		Symbol	Typical	Unit
Optical	CW Out Power	P_{op}	8	W
	Center Wavelength	λ	976±3	nm
	Spectral Width (90% of Power)	$\Delta\lambda$	<6.0	nm
	Wavelength Shift width Temperature	$\Delta\lambda/\Delta T$	0.35	nm / °C
Electrical	Threshold Current	I_{th}	0.6	A
	Operating current	I_{op}	9.5	A
	Operating Voltage	V_{op}	1.8	V
	Power Conversion Efficiency	η_{ep}	50	%
Fiber	Fiber Core Diameter	d_{core}	105	μm
	Fiber Cladding Diameter	d_{clad}	125	μm
	Numerical Aperture	NA	0.22	-
	Connector	-	SMA905	-

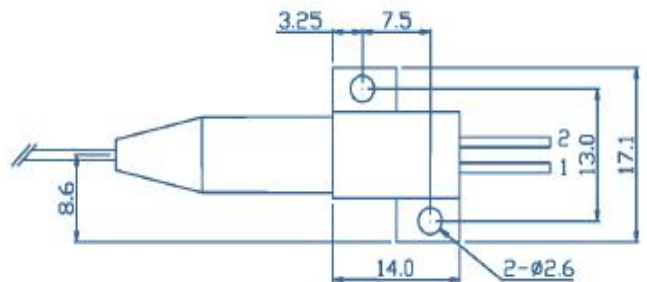
Other Parameters

Parameter	Operating Temperature/°C	Operating Relative Humidity/%	Storage Temperature/°C	Storage Relative Humidity/%	Lead Soldering Temperature, 10s max/°C
Min	10	-	-20	-	-
Max	40	75	80	90	250

Package Dimensions (mm)



Pin-Out Assignment	
Pin	Function
1	LD (+)
2	LD (-)



Changchun New Industries Optoelectronics Tech. Co., Ltd
<http://www.cnilaser.com>

◆ CONTACT

No.888, Jinhu Road, High-tech zone, Changchun
 130103, China

Phone: 0086-431-87033597

Fax: 0086-431-87033597

